



DIGITAL DATELINE

“BUILD IT LIKE WE OWN IT”

In January GM announced plans to spend \$4 billion to expand Orion Assembly to build the Silverado and Sierra EVs.



Wednesday marked a key milestone in that project as Gallagher-Kaiser Corporation begins work on a new paint shop that will cost \$1 billion.

This state-of-the-art facility will cover nearly 1.5 million square feet on three floors and two mezzanines.

It will feature robotic plug installation, robotic hem, robotic sword brush duster and topcoat defect vision systems.

Unlike the current 3-wet system, the shop will employ a Global flex system that will produce a high-quality finish for our customers.

The new shop will also have the added capability of doing two-tone painting.

During the ceremony, paint shop team member Ron Robinson was presented with a commemorative shovel for his 51 years of service to GM making him the highest seniority Orion Paint Shop employee.



The paint shop project is just one of many projects that are getting underway this summer and fall.

These projects will be focused primarily around the perimeter of the plant.

This will allow Orion to continue building the Bolt and Cruise AV well into 2023 before we need to convert the main building.

There will be more to share about the rest of the project in the coming weeks.”



Please clean out refrigerators by end of shift Friday



- Power will be off for an extended period during the 3-day weekend, starting 5 p.m. Friday
- Food left in the fridges could spoil so please take home or dispose as appropriate
- This affects GA, Body and Material and Quality areas within each department (See following slide for specific locations)

Areas affected by power outage this weekend

GA

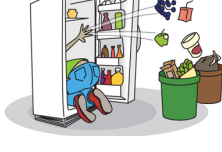
- Office / Nerve Center
- Headliner
- Glass Cell
- Fluid Fill PC's
- Align / DVT
- Repair Fill
- Cradle AGV's
- Tire / Wheel

Body

- AA / AM Zones (G2)
- BA Zone
- KA Zone
- CA / CN Zones
- FA / HA / LA Zones
- CMM Room & Training Center
- Maint Workstations in any of the zones listed above
- Perceptron PC's in any of the zones listed above

Facility

- ASH's attached to any of the impacted buses
- Bay lighting on the impacted buses
- A-Dock Doors & Ramps
- B-Dock Doors & Ramps
- M-Dock Doors & Ramps
- Mobile equipment chargers on any of the impacted buses
- 2nd Floor engineering mezzanine



ULTIUM LORDSTOWN PLANT BEGINS BATTERY CELL PRODUCTION



Source: Dan O'Brien - [businessjournaldaily.com](#)

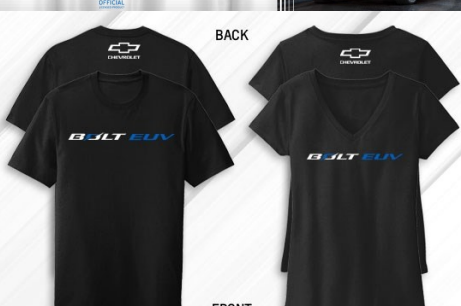


CHEVROLET
 ChevyElectricCollection.com

NEW!

BOLT EUV

MEN'S & WOMEN'S T-SHIRTS



[WANT SOME BOLT EV OR EUV SWAG? CHECK OUT THIS LINK FOR AUTHORIZED BOLT MERCHANDISE](#)



Union-Made Labor Day BBQ Shopping List



Union-Made Back to School Shopping List

UAW LOCAL 5960

BLOG EVENTS TAKE ACTION ABOUT US BENEFITS CONTACT US DIGITAL DATELINE EDUCATION UAW LOCAL 5960 STANDING COMMITTEES

WELCOME TO OUR NEW WEBSITE

In an effort to better communicate with members, this new site is easier to navigate and brings you more info from your union.

Scroll down for more

JOIN OUR NEW WEBSITE FOR THE LATEST UAW LOCAL 5960 NEWS & INFORMATION [CLICK HERE](#)

